



Contents

<i>I</i>	<i>Brief History</i>
<i>II</i>	<i>Mission</i>
<i>III</i>	<i>Guiding Principle</i>
<i>IV</i>	<i>Service Boundary</i>
<i>V</i>	<i>Fleet List</i>
<i>VI</i>	<i>Major Approval</i>
<i>VII</i>	<i>Organization</i>
<i>IX</i>	<i>Contact Detail</i>



Brief History

1990's

- 07. 1991 Established Youngchang Enterprise Co., Ltd.
- 03. 1998 Acquired the certificated of ISM code

2000's

- 07. 2001 Established Won Nam shipping co., Ltd
- 02. 2005 Registered the business of Ship management
- 12. 2006 Granted the Grand prize in 2006 Coastal shipping
- 06. 2008 Delivered "YC Kalmia"
- 07. 2008 Delivered "YC Clover"
- 07. 2010 Delivered "YC Lilac"

2010's

- 02. 2011 T/C in "Dongbu promy 3"
- 03. 2011 Granted the certificated of commendation as the exemplary taxpayer
- 09. 2012 Delivered "YC Cosmos"
- 10. 2012 Delivered "YC Acacia"
- 03. 2013 T/C in "Dongbu Promy 2"
- 08.2014 Delivered "YC Iris" (Ex.Name "Dongbu Promy 3")
- 10.2014 Delivered "YC Dahlia" (Ex.Name "Dongbu Promy 2")
- 05.2017 Sold out "YC Lilac"
- 12.2017 Head office Relocation



Our Mission

Mission

Our aim is to provide the high quality service, becoming robust shipping company. To accomplish our main goal, we improve our business system and reinforce our strengths with environmental and social responsibility consistently

Strategy

Our core strengths contain development and application of technology with skilled man power to fulfill customer-focused business

Commercial Overview

**Deliver oil & chemical worldwide
International commercial operation & chartering
Meeting growing demands in market**



Health, Safety and Environment policy

Zero marine accidents

Marine environment protection

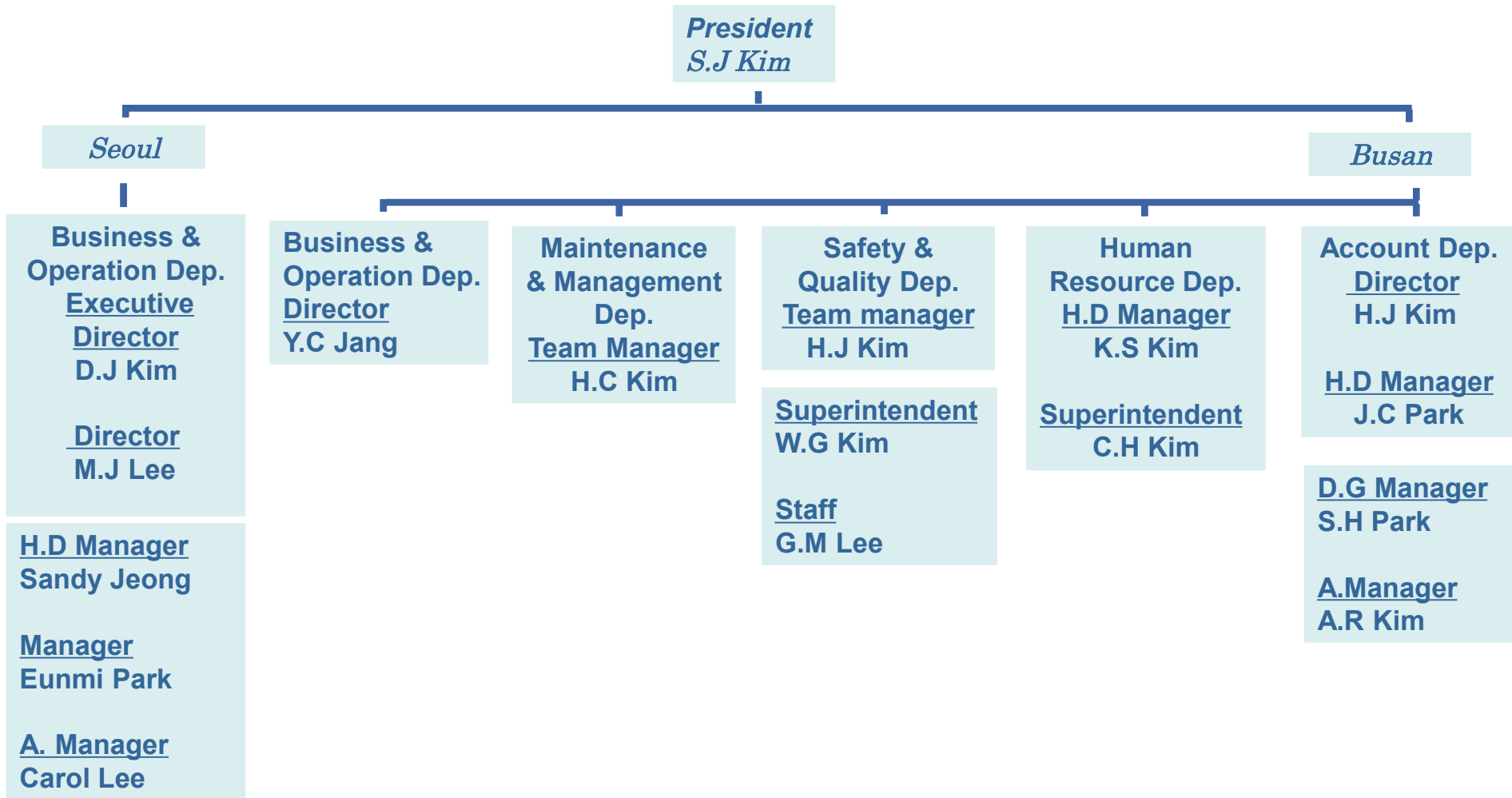
Internal & external customer's satisfaction

Observance of relevant rules & regulation

Safe working environment



Organization



(5 persons in Seoul)

(11 persons in Busan)

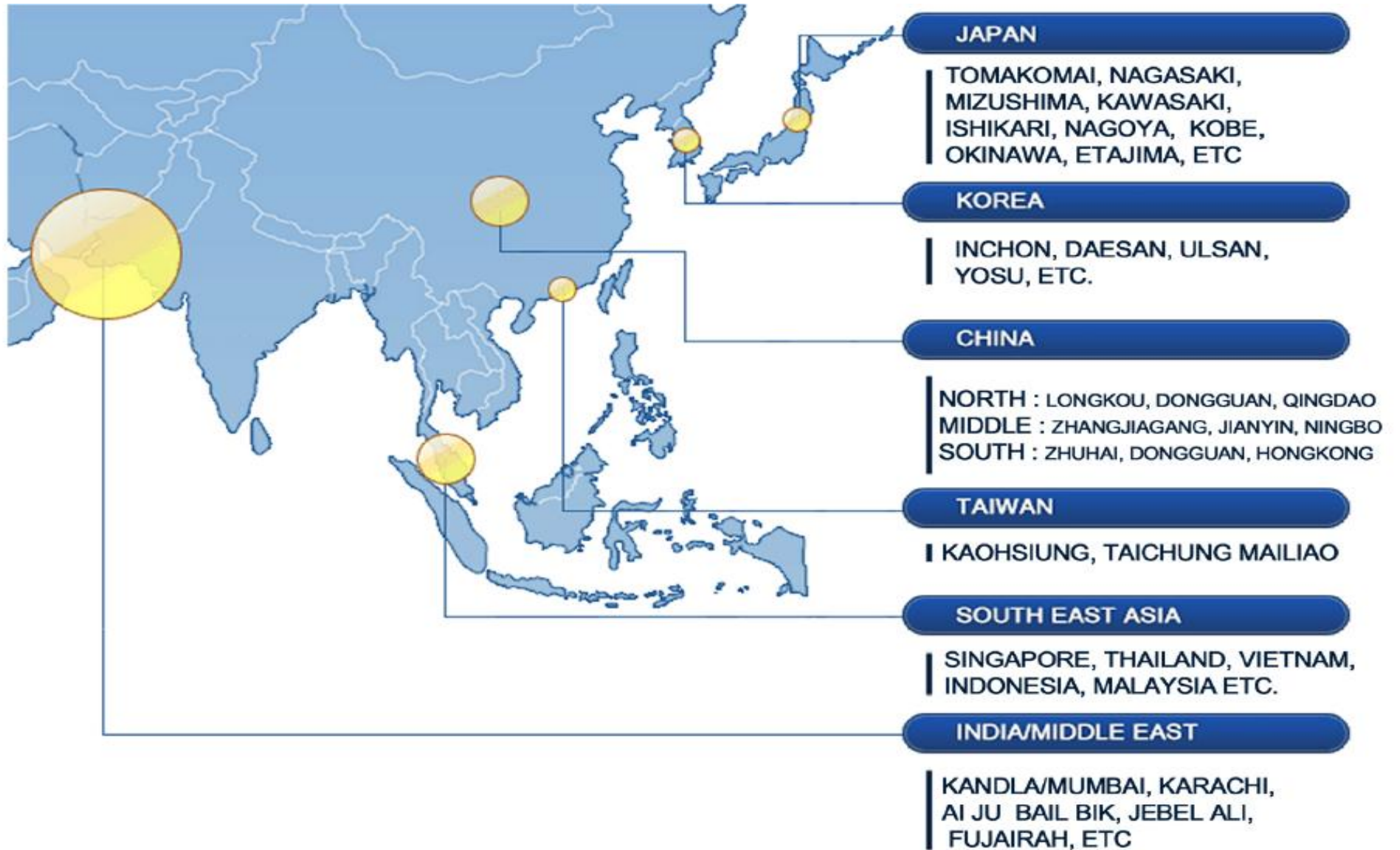


Fleet List

VESSEL	TYPE	BUILT	GRT	DWT	LOA	DRAFT	CAPACITY	COATING	REMARK
							(100% CBM)		
YC CLOVER	IMO 2	2008	5,667	8,981	114.4	7.813	9,747	EPOXY	
YC ACACIA	IMO 2	2008	4,060	5,646	105.6	6.613	6,514	ZINC	
YC COSMOS	IMO 2	2008	4,060	5,646	105.6	6.613	6,519	ZINC	
YC DAHLIA	IMO 2	2010	7,072	10,976	121.4	8.464	12,041	EPOXY	
YC IRIS	IMO 2	2011	7,072	11,056	121.42	8.464	12,041	EPOXY	



Service Area



Contact Detail

**Head Office in Busan*

Marine Technical Team :

Email: smt@youngchang.net

TEL: +82-51-661-1023

Safety Quality Team:

Email: sqt@youngchang.net

TEL: +82-51-661-1031

Crewing Management Team:

Email: pmt@youngchang.net

TEL: 82-51-661-1099

Business & Operation Team

Email: ops@youngchang.net

TEL: +82-51-661-1011

General Affair Team

Email: gat@youngchang.net

TEL: +82-51-661-1003

** Seoul Office*

Business & Operation Team(Overseas):

Email: ops@youngchang.net

TEL: +82-2-732-7017

Common Email: mrd@youngchang.net (Busan & Seoul)

